

# pezzolato

**H 980/300**

**WOOD-CHIPPER**

---

**P.T.O. VERSION**

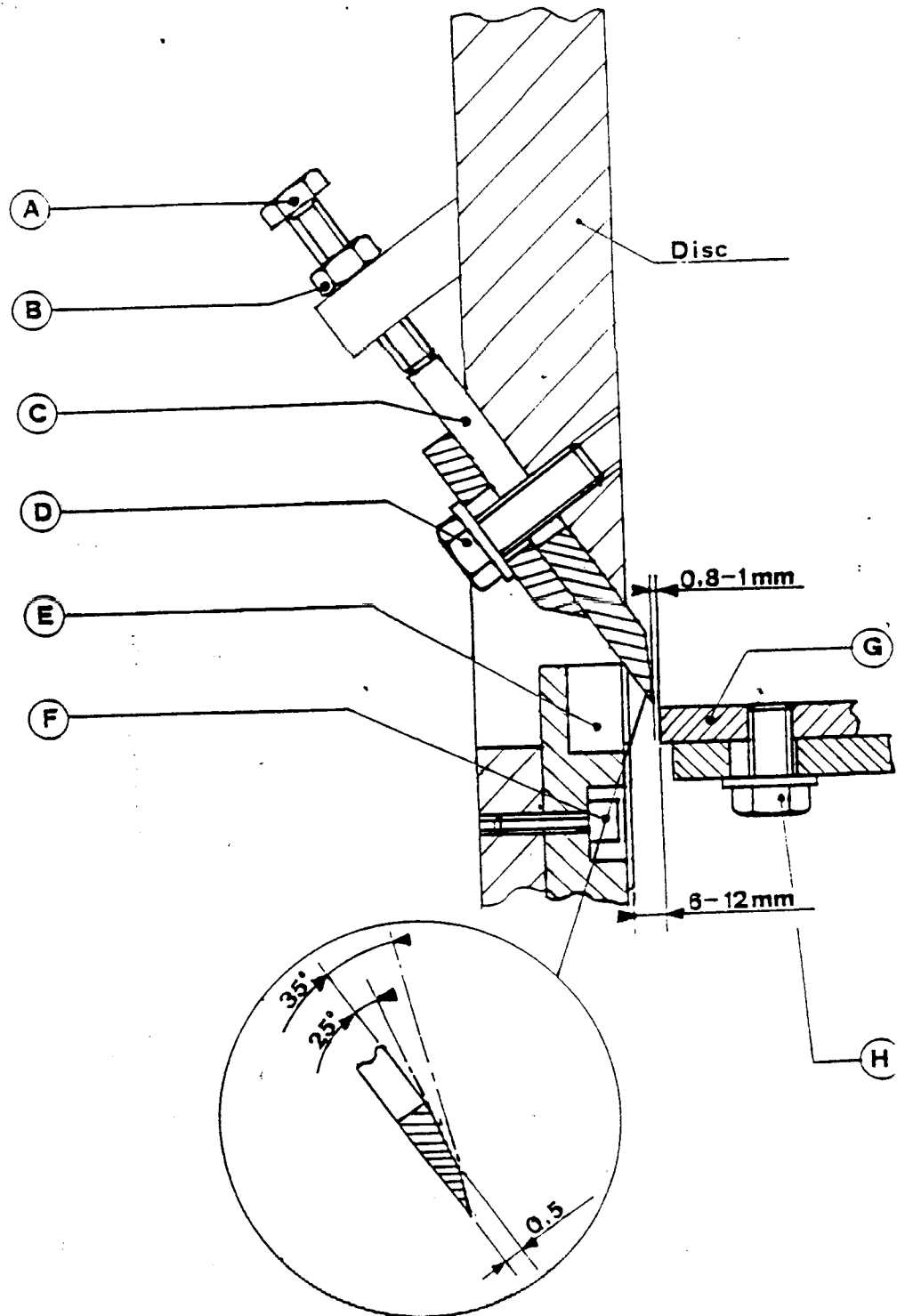
---

**USE & MAINTENANCE**

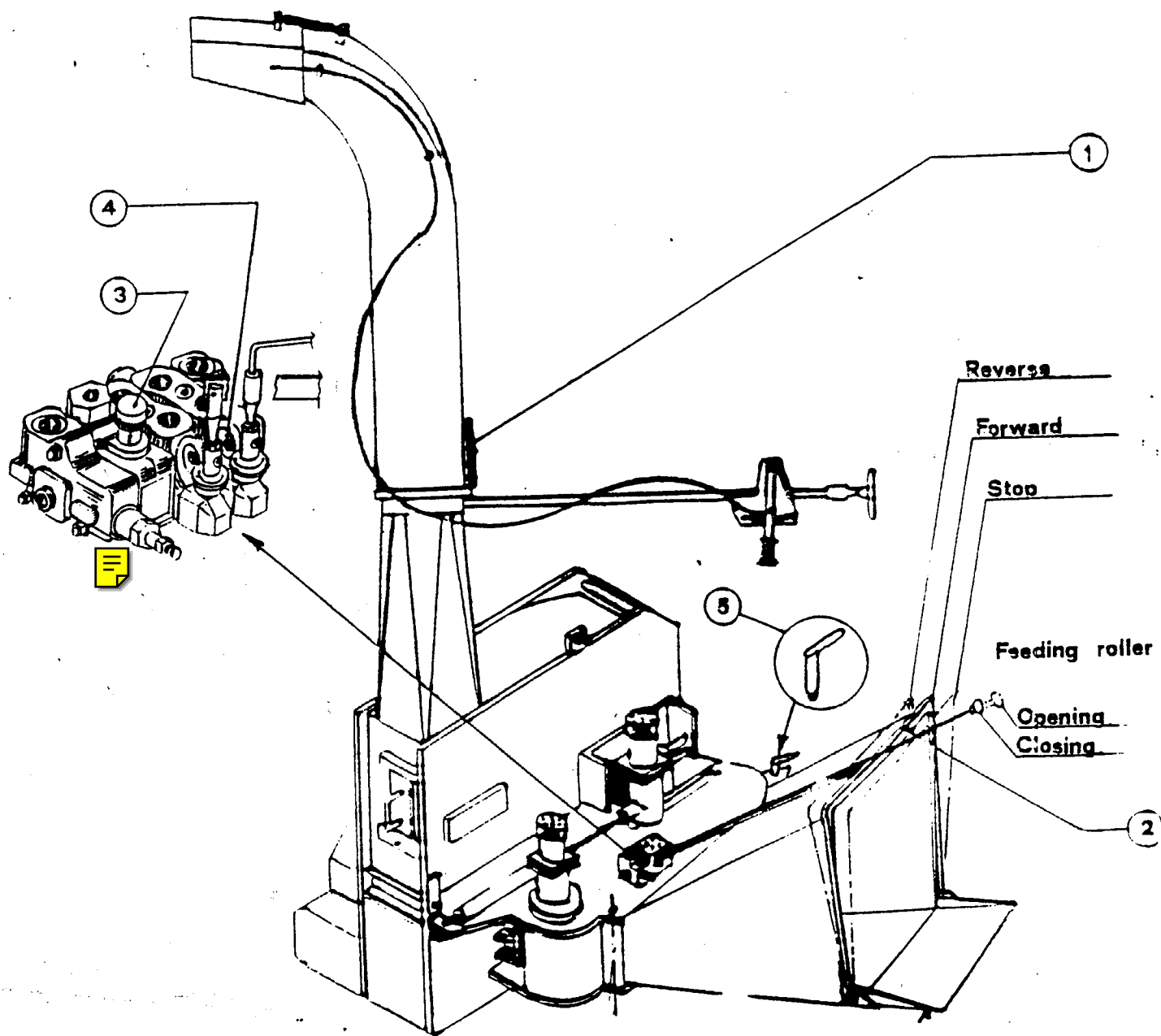
**MANUAL**

---

BLADE ADJUSTMENT



MACHINE RUNNING

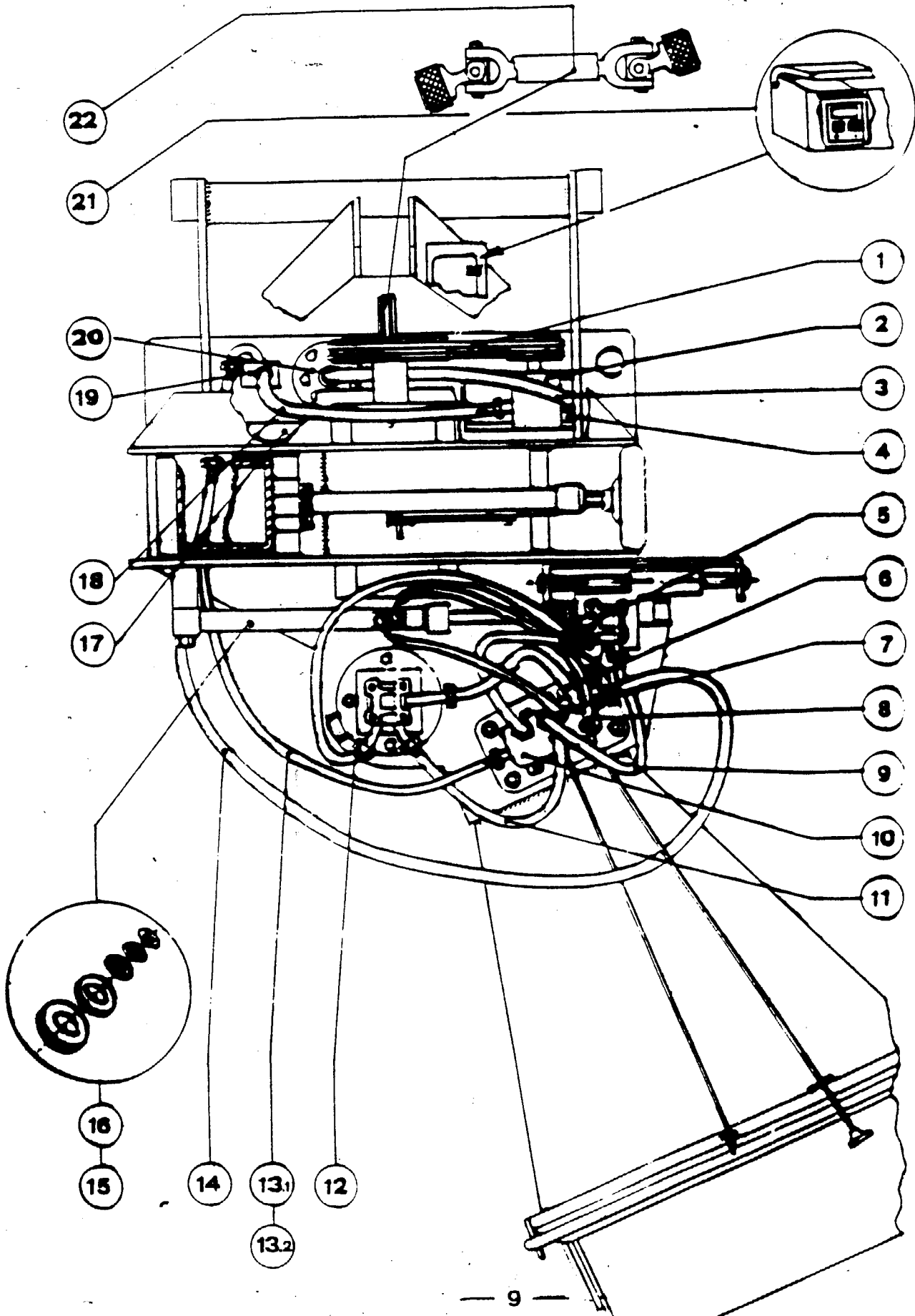


## LIST OF SPARE PARTS SHOWN OF DRAWING PAGE 9

Pos.	Code number	Description
01	05300320	Belt SPA 1107
02	06500220	Pump HLPD/G 214C
03	08000030	Leghorn pipe D.25 x 480
04	04500355	Support with pulley
05	08000139	Pipe R1T 1/4" x 580 SF 1/4" + Eyelet 1/4"
06	08000128	Pipe R1T 1/4" x 310 F90° 1/4" + SF 1/4"
07	08000247	Pipe R2T 3/8" x 540 F90° 3/8" + SF 3/8"
08	08000247	Pipe R2T 3/8" x 540 F90° 3/8" + SF 3/8"
09	08000420	Pipe R2T 1/2" x 470 F90° 1/2" + SF 1/2"
10	07000005	Distributor valve SD 6
11	08000410	Pipe R2T 1/2" x 410 SF 1/2" + SF 1/2"
12	08000445	Pipe R2T 1/2" x 600 F90° 1/2" + F90° 1/2"
13.1	08000529	Pipe R2T 1/2" x 1600 SP 15 + F90° 1/2"
13.2	08000555	Pipe R2T 1/2" x 1850 SP 15 + F90° 1/2"
14	08000532	Pipe R2T 1/2" x 1400 F90° 1/2" + SP 15
15	09500305	Piston gasket kit
16	07300115	Piston 50/60 Rod 22 Stroke 350
17	09700180	Hourmeter
18	08000415	Pipe R2T 1/2" x 450 SP 15 + PD 15
19	09400120	Valve - DF 5
20	07800045	Filter - AMF 151CV 010B4
21	09400145	No-stress
22	09700025	Power shaft Type 108 086FF099001

HYDRAULIC CIRCUIT

HYDRAULIC CIRCUIT



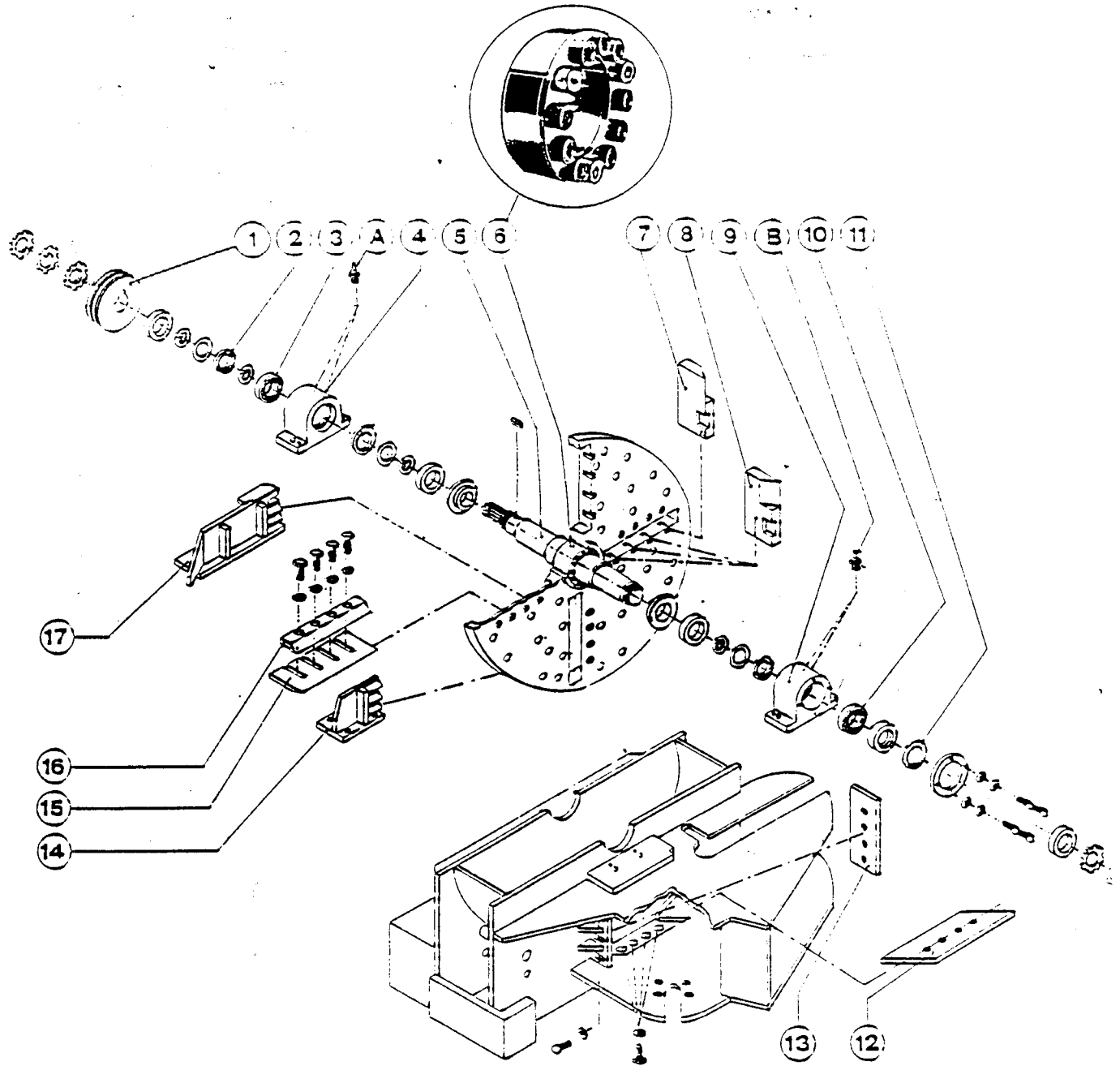
## LIST OF SPARE PARTS SHOWN ON DRAWING PAGE 11

---

Pos.	Code number	Description
01		Pulley P.212
02	09600330	Oil seal (140 x 100 x 13)
03	04800155	Bearing 22216 CO
04	01001515	Front support
05	02006210	Shaft
06	09700280	Key coupling
07	02204501 D	Micro-blade right h.
08	02204501 S	Micro-blade left h.
09	01001516	Rear support
10	04800155	Bearing 22216 CO
11	09600325	Oil seal (125 x 100x 12)
12	02204504	Counter-blade - Horizontal
13	02204503	Counter-blade - Vertical
14	01000230	Small fan
15	02204500	Big chipper blade
16	02004502	Blade pusher
17	01000235	Big fan

CHIPPING DISC, SHAFT AND BEARINGS

CIPPING DISC SHAFT AND BEARING



## LIST OF SPARE PARTS SHOWN ON DRAWING PAGE 13

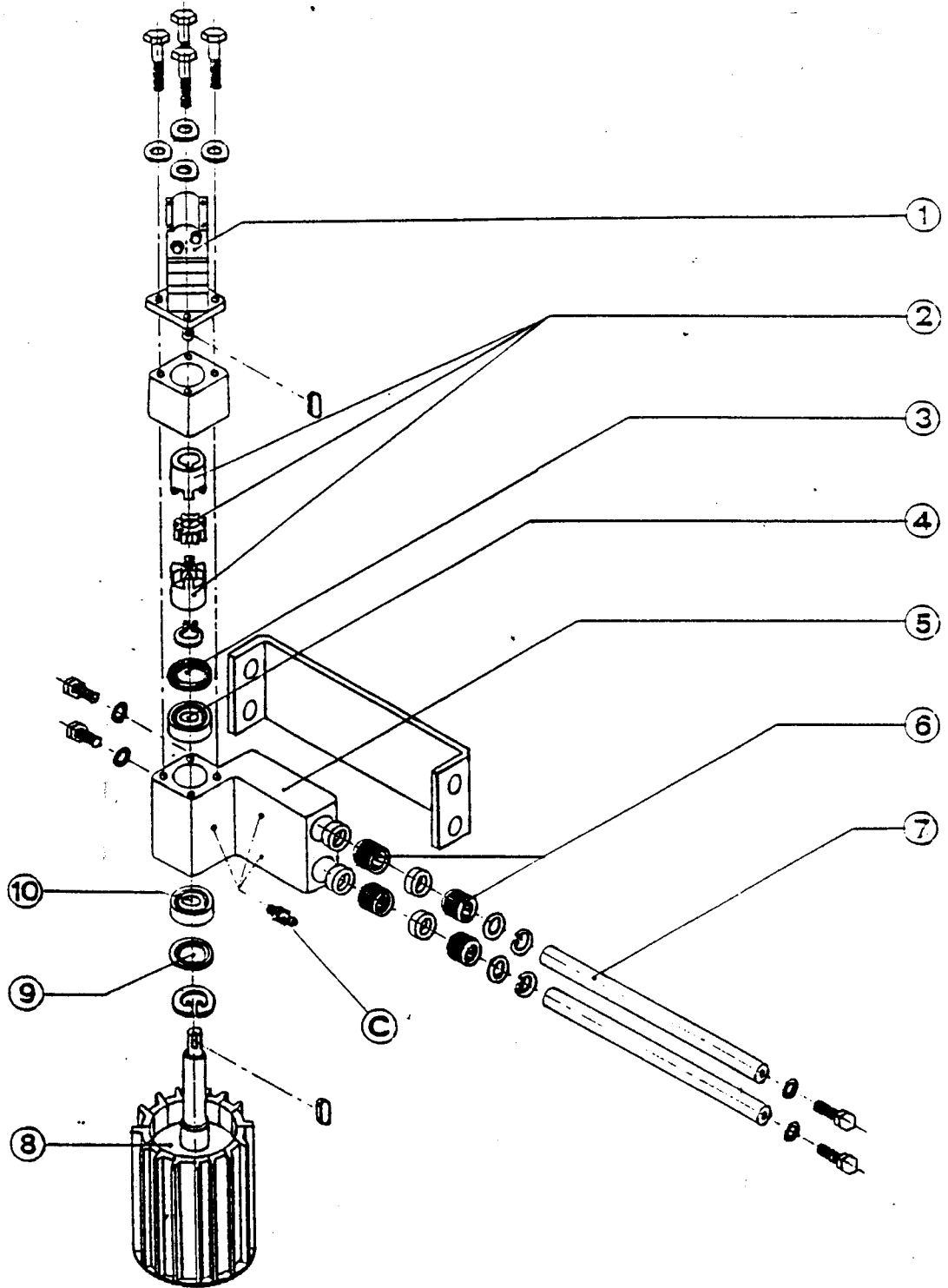
---

Pos.	Code number	Description
01	03900030	Hydraulic motor
02	07500045	Complete coupling
03	09600425	Oil seal (90/50/10)
04	04800140	Bearing 22210 EB33
05		Roller support
06	04800410	Linear bearing LBCR 40 2LS
07	09500710	Guide
08		Roller d. 285
09	04800592	Nilos (90/50/4)
10	04800140	Bearing 22210 EB33

MOBILE FEEDING ROLLER



MOBILE FEED ROLLER



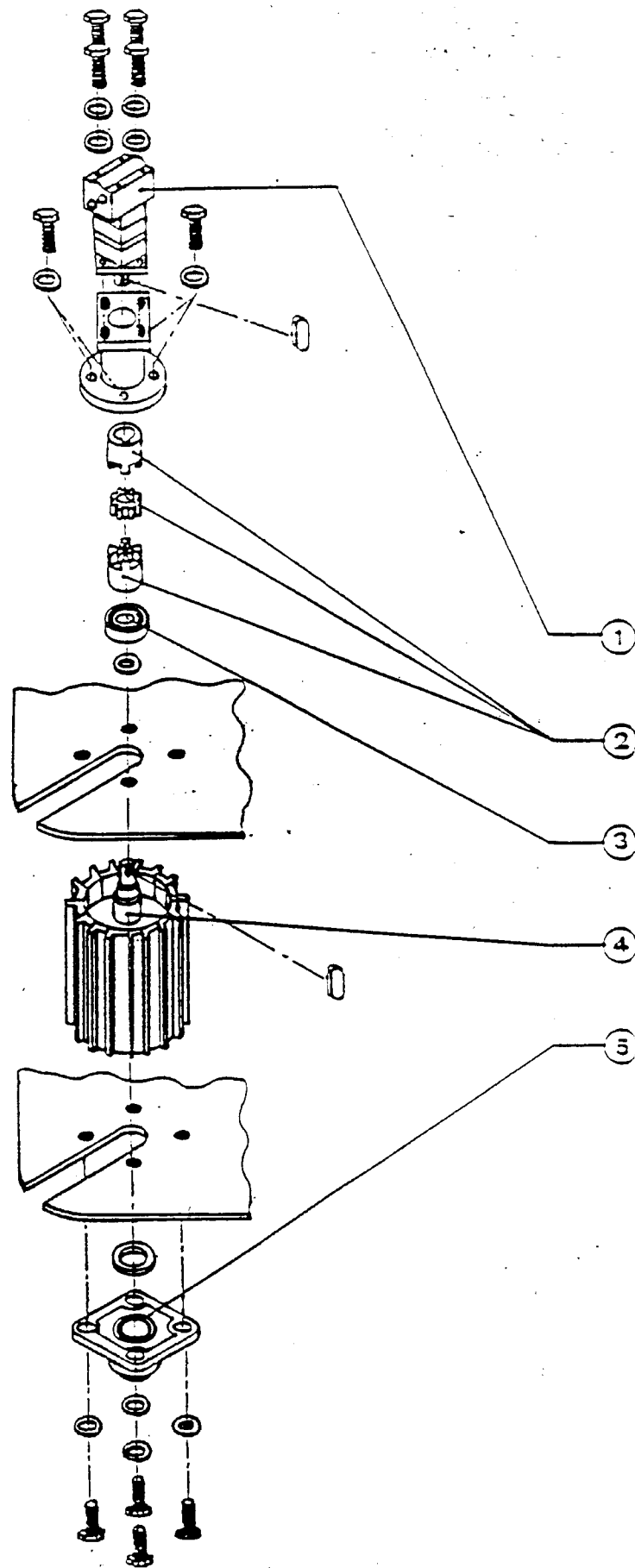
## LIST OF SPARE PARTS SHOWN ON DRAWING PAGE 15

---

Pos.	Code number	Description
01	03900030	Hydraulic motor OMS 315 D.32
02	07500045	Complete coupling
03	04800080	Bearing 6210 2RS
04		Roller d. 282
05	04800355	Support UKF 211

FIXED FEEDING ROLLER

FIXED FEED ROLLER



CHIPPER EJECTING PIPE

